



Endurance™ Flex Modules

Glass-free Direct-Bonded Solar for Metal Roofs, Boats, Vehicles

Powered by **MERLINSOLAR**
REDEFINE POSSIBLE

Less than half the weight of traditional rooftop solar panels!

Quick and Easy to install; Bonds to metal, fiberglass, curved surfaces, and more!

No surface penetration required, just “peel” and “stick”

Performs at low sun angles and when applied to flat/non-tilted surfaces

Built for Performance and Durability

- High efficiency, monocrystalline silicon solar cells with Merlin™ Interconnect
- Weather resistant package, sealed junction boxes, durable back-sheet
- Butyl adhesive rated to 150 mph wind
- Size, Layout, and Junction Box location tailorable to meet layout requirements

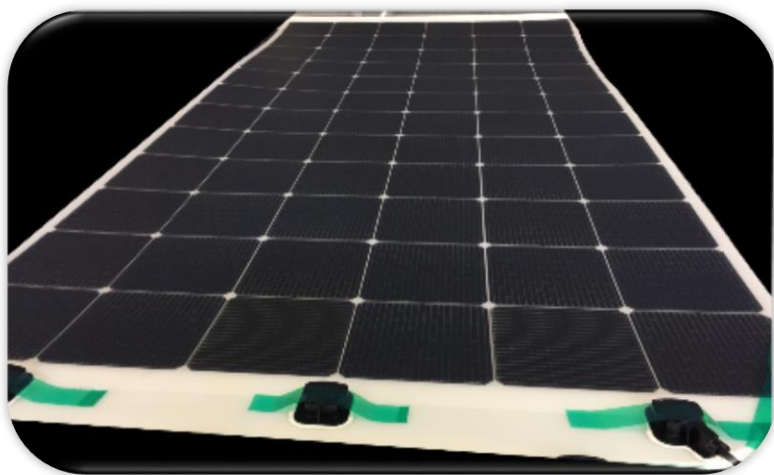


Warranty

Application	Material & Workmanship	Power Output
Rooftop	5-year limited warranty	<ul style="list-style-type: none"> • 90% minimum 10 years • 80% minimum at 20 years
Transportation	1-year limited warranty	<ul style="list-style-type: none"> • 80% minimum at 5 years

Rooftop Solar Qualifications

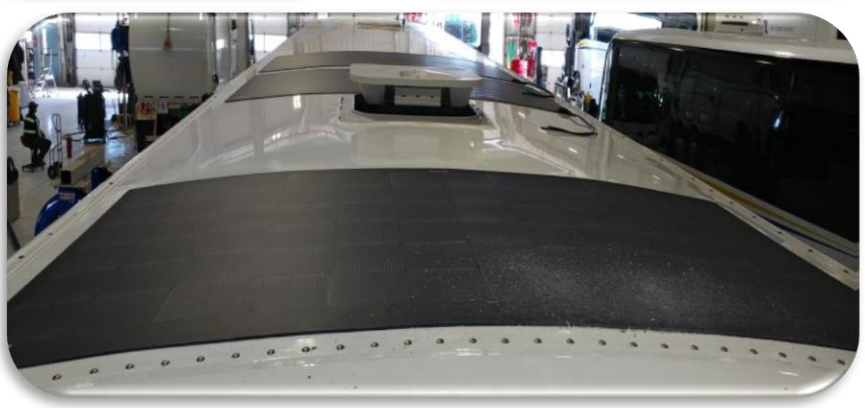
UL 1703
IEC 61215 / 61730



Nishati Endurance™ Flex

Example Characteristics¹

Nishati Endurance Model	EF-110	EF-160 / 160X	EF-170 / 170X	EF-330 / 340
PV Solar Cell Type	mc-Si PERC	mc-Si	mc-Si PERC	mc-Si / mc-Si PERC
Number of cells	24	36	36	72 (2 x 36 in parallel)
Cell Layout	2x12	2x18 / 6x6	2x18 / 6x6	6x12
Dimensions (L x W)	79.9" x 14.7"	117.4" x 14.7" / 42.0" x 38.9"	117.4" x 14.7" / 42.0" x 38.9"	78.4" x 43.7"
Back-sheet color ²	White	White	White	White
PV Solar Cell Efficiency	21.5	19.7	21.5	19.7/21.5
Maximum Rated Power, Pmax (W) ³	114	160	170	330 / 340
Voltage at Maximum Power, Vmp (V)	12.93	19.34	19.56	19.3/19.6
Current at Maximum Power, Imp (A)	8.81	8.54	8.81	8.54 / 8.81
Open Circuit Voltage, Voc (V)	15.95	23.0	23.9	23.0 / 23.9
Short Circuit Current, Isc (A)	9.10	8.81	9.10	8.81 / 9.10
Active Area Module Efficiency (%)	19.4	19.4	19.4	18.4 / 19.4
Termination	J-box with PV cable & polarized connectors			
<p>1. STC standard test conditions: 1000 W/m² intensity, Air Mass 1.5, 25°C cell temperature. Power tolerance is ±5.0% at STC. The electrical characteristics are within ± 5.0% unless otherwise specified.</p> <p>2. Black and other colors available. Performance may vary.</p> <p>3. Stabilized Power</p>				



2200 E. Williams Field Rd. Ste 200
Gilbert, AZ 85295
571-999-3482

Portable • Rugged • Effective
Solar Power

Website: www.nishati-us.com
Patents: www.nishati-us.com/patent
E-mail inquiries: Info@nishati-us.com