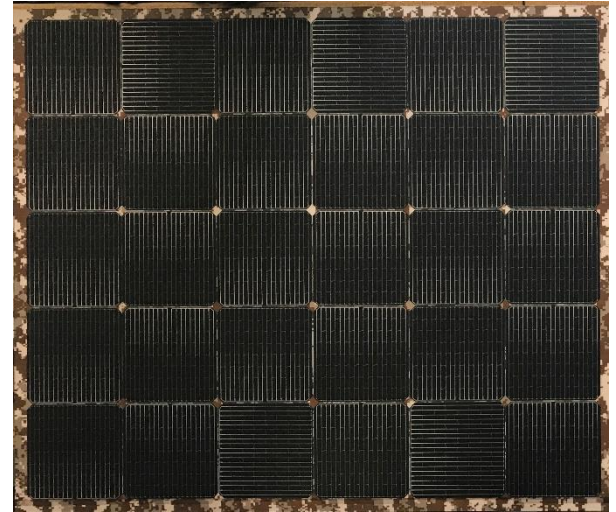
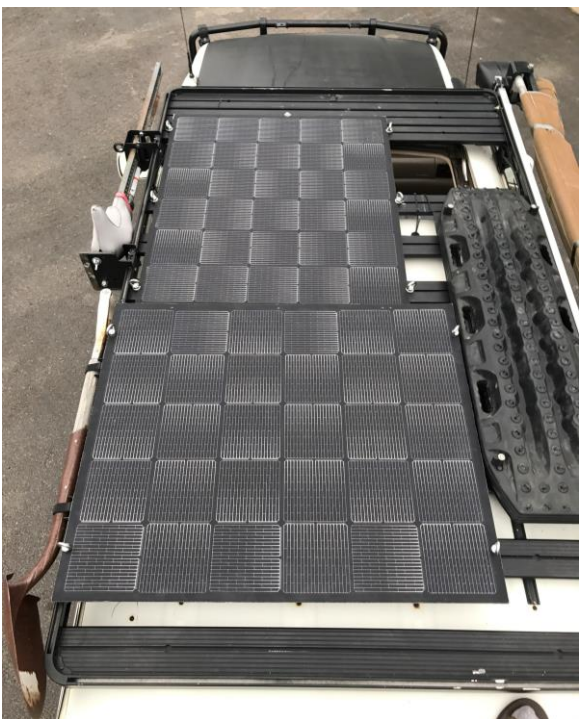


140-Watt Rigid, Lightweight, Rugged and Portable Solar Panel Adaptable to Many Portable and Remote Power Applications Easy Carry and Install onto Support Structures, RVs, and More

- **Powerful:** Highly efficient module maximizes power to batteries and electronic equipment
- **Durable:** Glass-free laminate and polymer construction; mechanically robust / thermally effective / electrically efficient
- **Weatherproof:** Protected against dust and water immersion (up to 1-meter depth)
- **Low maintenance:** Non-stick surface resists soiling / wipes clean
- **Non-reflective:** Maximize light capture, reduce visual signature



Military-grade Ruggedness, Lifetime Performance, Reliability



Featuring Merlin™ Gridded Interconnect

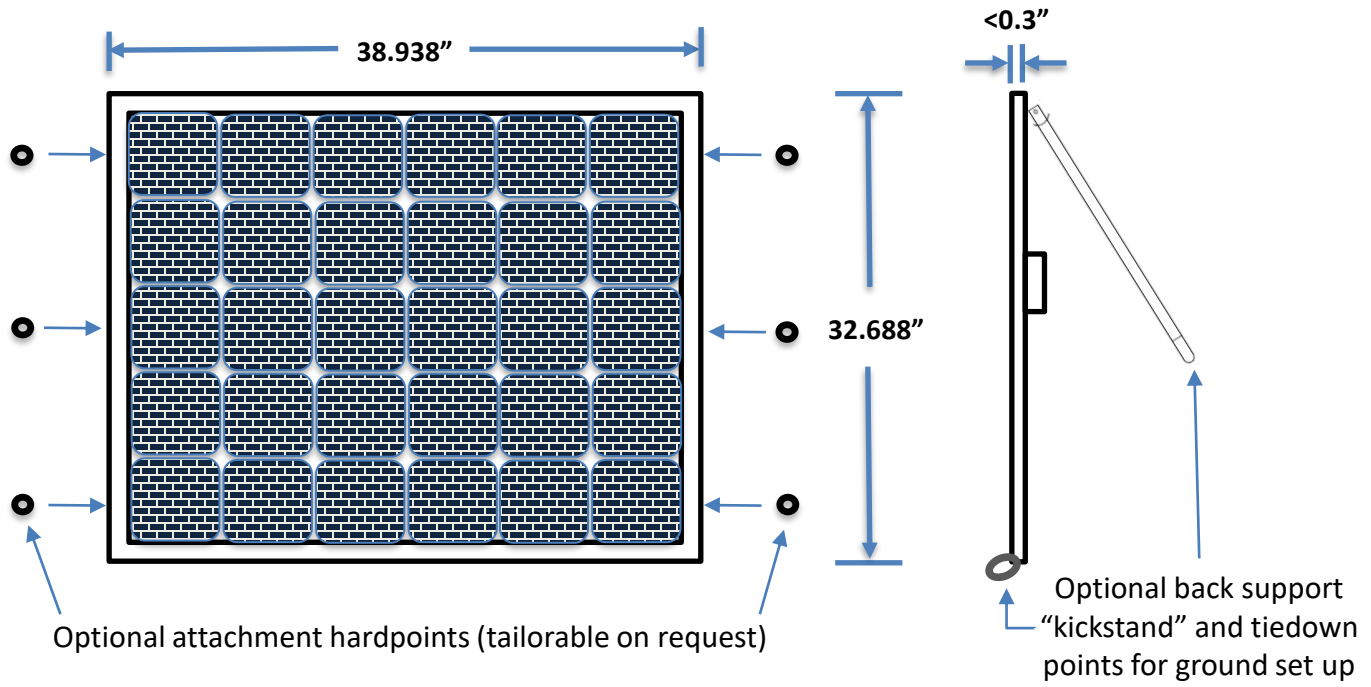
- Industry-best thermal, mechanical, electrical robustness
- Flex and vibration tolerant
- Improved Electrical Redundancy and Continuity

Attach to Emergency or Overland Vehicle roofs rails or detach/ use on the ground with batteries & portable power electronics



Nishati Endurance™ 140

Nishati Endurance™ 140 Specifications		
General Description		
Part Number	226286	
PV Cells	Mono-crystalline Silicon PERC with Merlin Interconnect	
Power Output Connections	Amphenol H4 PV Connector	
Limited Warranty	2 years	
Module Power Output		
Rated Power (Pmax)	144 Watts (±3%)	At Standard Test Conditions: Cell temperature 25°C Air Mass 1.5 Solar Irradiance 1000 W/m ²
Vmp	16.4 V (±3%)	
Imp	8.8 A (±3%)	
Voc	20.0 V (±3%)	
Isc	9.1 A (±3%)	
Maximum System Voltage (DC)	600V	
Module Dimensions		
Dimensions (LxWxD)	39.938" x 32.688" x 0.7" (panel + junction box)	
Weight	10.5 lbs.	
Environmental	IP67	



2200 E. Williams Field Rd. Ste 200
Gilbert, AZ 85295
571-999-3482



Website: www.nishati-us.com
Patents: www.nishati-us.com/patent
E-mail inquiries: Info@nishati-us.com